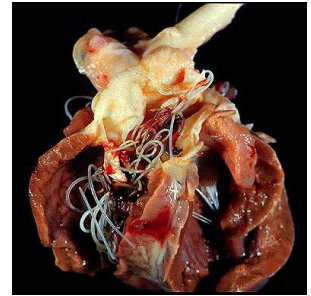


# Heartworm Disease & Prevention

## What is heartworm disease?

*Heartworm disease is a serious and potentially fatal condition caused by parasitic worms living in the arteries of the lungs and occasionally in the right side of the heart.*

~American Heartworm Society



## How do pets get heartworms?

Adult worms reproduce. By six months, microfilariae may be found in the blood.



Mosquito ingests blood infected with microfilariae from an infected dog.



Microfilariae develop into infective larvae within the mosquito.



Infective larvae enter a new host when the mosquito feeds.

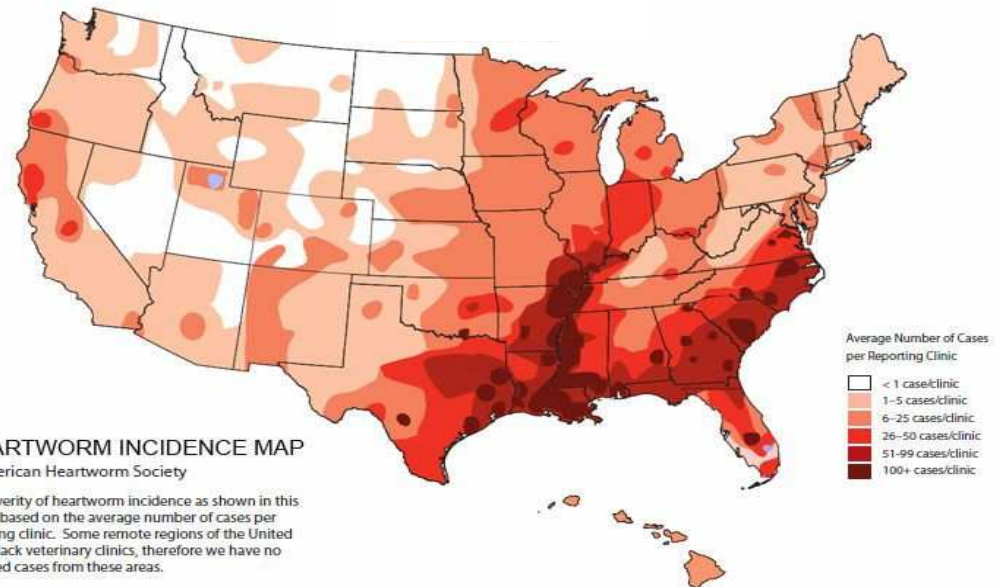
Larvae migrate to the right side of the heart and develop into adult worms.



## Heartworm Life Cycle

## Is my pet really at risk?

Heartworm disease is transmitted by mosquitoes. All pets are at risk, regardless of their lifestyle habits. Both indoor and outdoor pets can get heartworm disease. In the 2007 study conducted by the American Heartworm Society, Illinois veterinary clinics reported at least **6-25 cases per clinic**, with even higher numbers in Southern Illinois.



## Prevention

vs.

## Treatment

- Once a month medication
- 100% company guarantee
- Annual heartworm test
- Less than \$10 per month

- X-rays to determine severity
- Oral medication
- Arsenic-based injections
- Approximately \$800